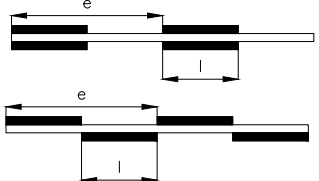
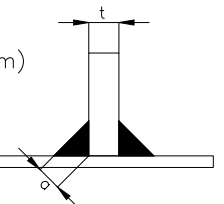


- DOUBLE CONTINUOUS WELDING:**
- Brackets for beams and other means of support
 - Transversal frames below waterline and floor
 - Foundations for engine(s), propulsion, and Equipment
 - Watertight BHD
- INTERMITTENT WELDING:**
- Longitudinal Bottom, Side & Deck Stiffeners
 - BHD Stiffeners

Thickness of plate t(mm) | Weld length l(mm) | spacing e(mm)
3 - 4,45 | 50 | 100

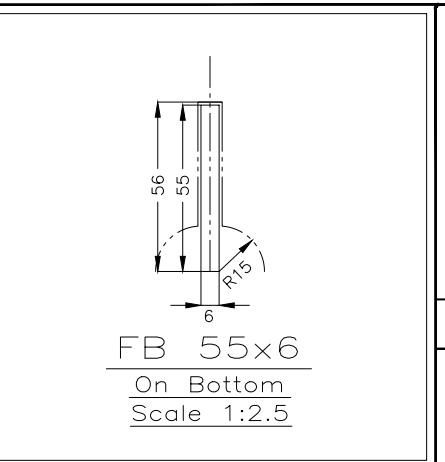
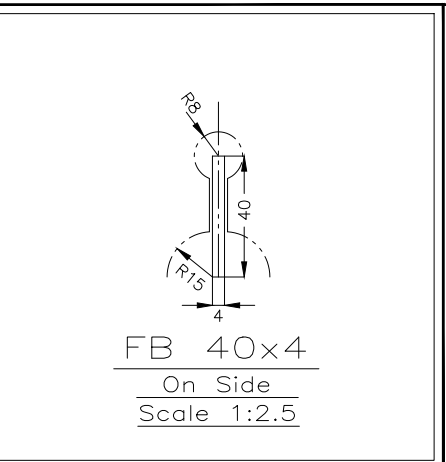
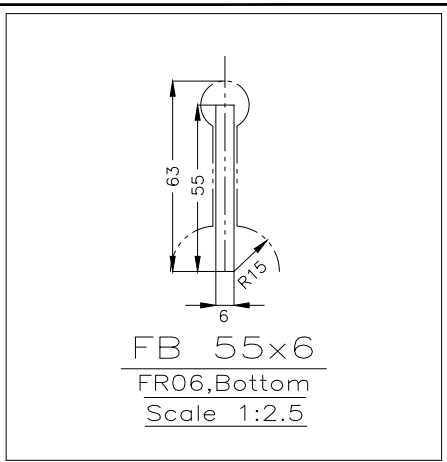


MINIMUM THROAT THICKNESS:
Plate Thickness (mm) | Throat thickness a(mm)
< 4 | 2.0
4 - 6,5 | 2.5



DETAIL C
Scale 1:10
TYPE

Basic Ship Data	
Length Over All	6.84 m
Length Hull	6.84 m
Bredth Moulded	2.4 m
Depth Moulded	0.65 m
Draft Moulded Fully Loaded	27.8 m
Displacement fully loaded	appr. 2.16 t
Frame Spacing	0.8 m
Fuel oil capacity	220 l
Deck area total	ca 6.04 m ²
Max Personnel on board	5 crew



HOORSUN MARINE TECH

Project: Search & Rescue Air Boat
Description: -

Signature:	Created by: NA		Date: 03/03/2022	
	Reviewed by: -		Date: -	
	Approved by: -		Date: -	
	Revision by: -		Date: -	
	Material: ALU			
BIK Port	Displacement:	Size:	Scale:	Page:
	2160 kg	6.84x2.4m	A3/1:25	1/1

Drawing no.:
HMT 002-300-01 Shell Expansion